





# WELCOME TO THE UNIVERSITY OF SOUTH WALES



Search: USW International



## THE INTERNATIONAL TEAM

We will help with questions about studying at USW and we provide support every step of the way, from your application to graduation.

Find out about USW and meet our friendly team online, in your country, or with a visit to our campuses in the UK.

## IN YOUR COUNTRY

We have team members and trusted representatives in countries all over the world. They can help you with entry requirements, your application, scholarships, accommodation and visa applications.

Visit the 'Your Country' section of our website for details: [www.southwales.ac.uk/international](http://www.southwales.ac.uk/international)

USW welcomes 4,000 students to its global community each year, from over 100 countries all over the world.



## SEE OUR CAMPUSES

We hold events online, bringing our campuses to the comfort and convenience of your office or home. You can register for our next event online: [www.southwales.ac.uk/open-days](http://www.southwales.ac.uk/open-days)

We also hold open days at our campuses in the UK. You can find out more and book your place online: [www.southwales.ac.uk/visitusw](http://www.southwales.ac.uk/visitusw)

If you cannot attend an open day but would still like to visit campus, please contact us and we'll be happy to arrange a visit.

Undergraduate: [UGGlobal@southwales.ac.uk](mailto:UGGlobal@southwales.ac.uk)  
Postgraduate: [PGGlobal@southwales.ac.uk](mailto:PGGlobal@southwales.ac.uk)

**OVER 170-YEAR TRADITION OF EDUCATION DATING BACK TO 1841.**

Pontypridd Campus, Glyntaff



**USW IS IN THE UK, WITH CAMPUSES IN AND AROUND CARDIFF, THE CAPITAL CITY OF WALES.**



Cardiff Campus



Newport Campus



# CONTENTS

About USW	6
Careers	10
Work placements	10
Location	12
Campuses	16
<b>COURSES</b>	<b>34</b>
International Pathway College at USW	62
Fees and scholarships	64
Living costs	67
Entry requirements	68
How to apply	69
English language courses	70
Student support	72
Visas and immigration	74
Arriving at USW	76
Information for parents	78
Accommodation	80
Student life	82
USW Sport	84
Useful information	86

## USW SPORT

We have some of the best facilities in the UK.

PAGE 84



## STUDENT FINANCE

We make studying at USW affordable with scholarships and tuition fee payment plans.

PAGE 64

### Search: USW International



## VISAS AND IMMIGRATION

Our Immigration and International Student Advice team can answer your questions any time.

PAGE 74

## STUDENT SUPPORT

For wellbeing and advice, you'll find a network of people ready to help.

PAGE 72







# FIND YOUR TOMORROW

A course at USW is more than just a qualification. We create graduates who are ready for tomorrow.

## COURSES

We offer smaller class sizes with exceptional support from lecturers and student support departments. What you learn is informed by employers and what happens in the workplace. You'll gain relevant skills and hear from people with real work experience in your field.

Many courses at USW have been accredited by professional bodies – this means they are of the highest standard and can lead to professional qualifications too.

See our courses.



## PROFESSIONAL SKILLS

Our students learn about their profession in environments that recreate the workplace, using the same equipment and software they'll find there too. This ensures you will build confidence and be ready for the workplace.

## GENEROUS SCHOLARSHIPS

USW offers generous scholarships for international and EU students, as well as competitive tuition fees and flexible payment plans. Turn to page 64.



Civil Engineering students testing concrete in the Materials Testing Laboratory, USW Pontypridd



## RESEARCH THAT MATTERS

Research at USW makes a difference in the real world. We change lives and our world for the better. 81% of USW's research impact is classed as world leading or internationally excellent (REF2021). This research informs our teaching, giving you a window to the latest thinking and developments.



“

**OUR STUDENTS ARE AT THE HEART OF EVERYTHING WE DO. WE MAKE A POSITIVE DIFFERENCE TO THE LIVES OF OUR STUDENTS, EQUIPPING THEM WITH THE SKILLS THEY NEED FOR TOMORROW.**

Dr Ben Calvert  
Vice-Chancellor



**MANY OF OUR COURSES START IN FEBRUARY AS WELL AS SEPTEMBER.**



## USW FAMILY

At USW you'll make friends for life and try lots of new things. Thousands of students come here every year, so you'll be part of a great community. This doesn't end when you graduate – you will automatically become a lifetime member of the University and join a global network of over 200,000 alumni in more than 200 countries.

**Search: USW International**

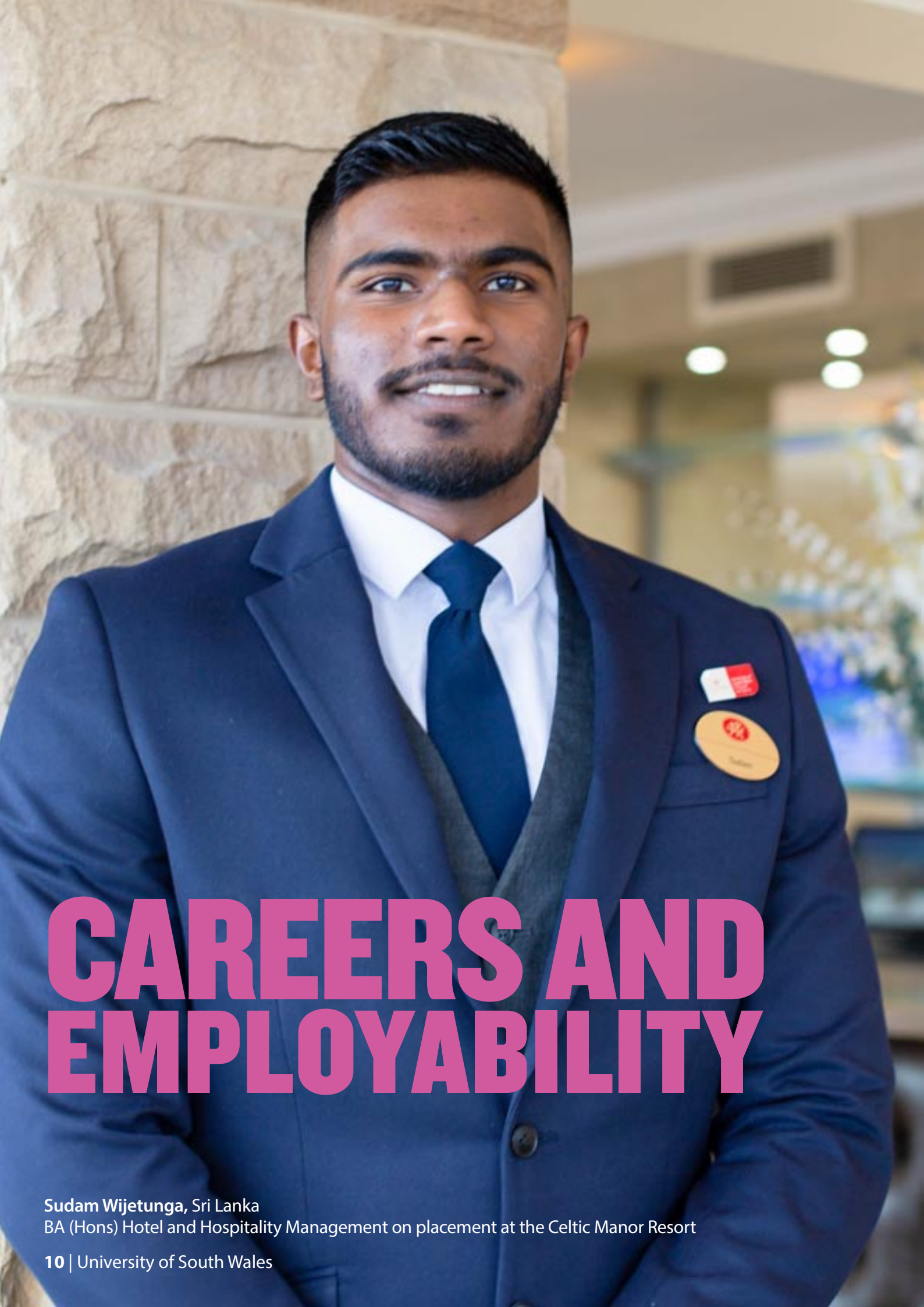


“

**I HAVE RECEIVED GREAT SUPPORT FROM THE UNIVERSITY AND WOULD RECOMMEND THE UK AND USW TO ANY STUDENT.**

Grace Mungkaje  
Chevening Scholar, Papua New Guinea





# CAREERS AND EMPLOYABILITY

Sudam Wijetunga, Sri Lanka  
BA (Hons) Hotel and Hospitality Management on placement at the Celtic Manor Resort

At USW, we want to help you achieve your ambitions. We create graduates who are prepared for a successful career. Our courses offer work-related experience, reflect employer demands and give students practical skills for the real world.



## WORK EXPERIENCE

Work-related experience is an advantage in today's competitive job market. We have a team to help you find work experience in the UK and overseas. There are lots of types of work experience: it might be part of your course, a work placement, voluntary work, or working on projects. We also have business start-up support on campus.

## USW BUSINESS CLINIC

The USW Business Clinic is an education scheme. Our industry clients give business students a problem to work on, and they provide advice with a report and recommendations. The Business Clinic can help you gain industry experience, develop your communication skills and enhance your CV.



## COURSES WITH WORK PLACEMENTS

We encourage our students to take up a work placement. Many of our courses offer work placements as part of your study. These will enhance your employability, improve your CV and allow you to build industry networks. For a list of courses, visit our website.

## CAREER PLANNING

Our USW Careers service helps you think about your career options, and how to develop the skills and experience you need. We will help you while you are a student, and for up to three years after you graduate. We also offer practical help with finding work placements, completing job applications or practising interview techniques.

## GRAD EDGE AWARD

We want our graduates to stand out, so we created the Grad Edge Award: it is an optional programme of events and activities to get you thinking about graduate careers. You will complete work experience, develop your workplace skills, and take part in a mock interview. All this will give your CV a solid foundation and help you perform well in graduate interviews.



## PART-TIME WORK

Most international students studying on a student visa are able to work up to 20 hours per week during term-time and longer during vacations. We support you to find part-time work by organising a part-time jobs fair in October, where you can meet employers.

**VISIT THE CAREERS PAGES OF OUR WEBSITE**







ALL OUR CAMPUSES ARE EASILY REACHED BY ROAD, RAIL AND AIR, WITH AN INTERNATIONAL AIRPORT IN CARDIFF.

### TRAVEL TIMES TO CARDIFF

London		2 hours
Birmingham		2 hours
Bristol		50 minutes
Manchester		3 hours



# DISCOVER SOUTH WALES

The University is in South Wales, UK, with campuses in and around the capital city of Wales, Cardiff.



South Wales has vibrant city life, culture, nightlife and music festivals, award-winning beaches, outdoor adventure, history and breathtaking countryside. There are excellent links to all major cities in the UK, and London is just two hours away by train.

Wales is a country in its own right, but is part of the UK. It has its own unique culture and is a welcoming place to live and study. It is safe and affordable, and our students love the friendly atmosphere at USW - you're always made to feel welcome.



Brecon Beacons National Park



Glamorgan Heritage Coast



Cardiff Castle, Cardiff



# LOVE CARDIFF

Cardiff is a modern, multicultural, safe city. It's a great place to live and study, and is home to thousands of students from around the world.

Cardiff is the fastest growing major city in the UK. Here, you'll find an amazing quality of life, more green space per person than any UK city, and fantastic people. It is a small city, but there's lots going on and it's easy to get around.

Cardiff is also one of the most affordable cities in the UK. It's a popular student city that knows how to enjoy itself. From shopping to live sport to music, arts and history, there's something for everyone. Lots of USW students choose to live in Cardiff, even if they study in Pontypridd or Newport.



**THE PURPLE FLAG HAS BEEN AWARDED TO THE CITY OF CARDIFF FOR OFFERING AN ENTERTAINING, DIVERSE, SAFE AND ENJOYABLE NIGHT OUT.**



**WALES WITHOUT DOUBT HAS BECOME ONE OF MY FAVOURITE SPOTS IN THE UK. THE PEOPLE ARE VERY WARM AND FRIENDLY, AND CARDIFF IN PARTICULAR IS MULTICULTURAL.**

**Muhanned Kalash**  
Chevening Scholar, Libya.



# USW CARDIFF

Cardiff is a modern, multicultural capital city. Our campus for creative courses is in Cardiff city centre, putting you at the heart of the country's capital.

At USW Cardiff you can develop your work in a professional creative environment. You'll find specialist facilities, study spaces, a library and the Students' Union – all in one building.

Cardiff is well known as a city of culture and entertainment, so there are many opportunities for creative industries students. Our location in central Cardiff has allowed us to establish collaborations with leading venues, producers and companies. It's a great place to start your career.

**SEE WHAT THE  
CAPITAL CITY  
HAS TO OFFER  
STUDENTS**



USW Cardiff





# USW NEWPORT

Newport is an independent, multicultural city that's full of ideas and opportunities.

Just 20 minutes from Cardiff, USW Newport is at the heart of the city of Newport, overlooking the River Usk. Our modern campus is on the riverfront, home to a community of learning that's dedicated to improving people's lives.

Like the rest of USW, our Newport Campus is diverse and friendly. Everything you need is in one place, like the library and Starbucks, and most other things can be found in the city around campus. Halls of Residence are just a couple of minutes' walk from campus, with different room packages to choose from.



**SEE WHAT  
NEWPORT  
HAS TO OFFER  
STUDENTS**





# USW PONTYPRIDD

USW Pontypridd, Treforest



A diverse and friendly community is at the heart of our Pontypridd Campus, just 20 minutes from Cardiff city centre.

USW Pontypridd is surrounded by green open spaces. Our students say they love the community atmosphere, and the convenience of living and studying in the same place.

Everything you need is on campus – your classes, the library, cafes and bars, and friends to spend time with. Our halls of residence are also located here, home to students from all over the UK and the world.

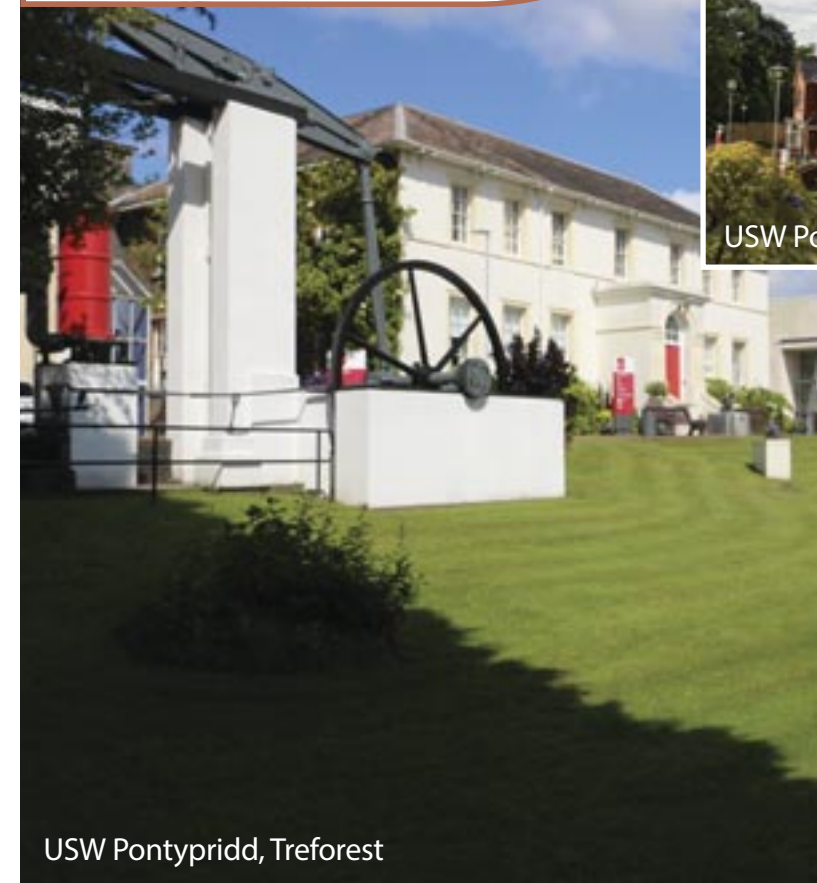


**SOUTH WALES IS DEFINITELY SOMEWHERE YOU CAN MAKE A HOME AWAY FROM HOME. MY OVERALL EXPERIENCE HERE HAS BEEN AMAZING.**

**Oscar Ferreira do Carmo**  
Chevening Scholar, Brazil, Master of Business Administration (MBA)



USW Pontypridd, Glyntaff



USW Pontypridd, Treforest

**USW PONTYPRIDD IS OUR LARGEST CAMPUS AND HAS TWO SITES; TREFOREST AND GLYNTAFF. THERE IS A TRAIN STATION NEXT TO CAMPUS WITH REGULAR TRAINS TO CARDIFF AND LINKS TO THE REST OF THE UK.**





**WHEREVER  
YOU STUDY,  
YOU'RE ALWAYS**

**WELCOME**







**A PLACE OF  
INSPIRING  
CONTRASTS**





# WITH SPACE TO FOCUS



# G HIDDEN EEMS





# THAT'S FRIENDLY

AND  
DOWN  
TO  
EARTH



Cardiff Bay



# WITH SURPRISES AROUND EVERY CORNER



Penarth Pier, Cardiff



# ACCOUNTING AND FINANCE

Accounting and finance teaching at South Wales Business School has everything you need. We offer a solid grounding in theory that's backed up by practical experience, so you can start work with confidence.

Accounting and Finance Undergraduate

## DID YOU KNOW

USW ACCA students have won global prizes in Strategic Professional Level papers for the last four years in a row.

## PROFESSIONAL RECOGNITION

USW is an ACCA Platinum Approved Learning Partner, the highest level of accreditation that a tuition provider can obtain. Our degrees offer maximum exemptions from the Association of Chartered Certified Accountants (ACCA) – the global body for professional accountants. You can also gain exemptions from other professional bodies: the Chartered Institute of Management Accountants (CIMA), the Institute of Chartered Accountants in England and Wales (ICAEW), the Chartered Institute of Public Finance and Accountancy (CIPFA).



## CAREER OPPORTUNITIES

Accounting and financial professionals are in demand all over the world. There's probably no better entry point to top jobs in business, industry, management and financial consulting, than becoming a highly qualified accountant or a finance specialist.

## PRACTICAL LEARNING

Learn how to use accountancy and auditing software that you'll find in the workplace when you graduate. We also have a trading room that uses Global Investor's Finance Lab software to simulate equity trading, as well as access to Thomson Reuters Eikon database that is widely used by the financial services sector.



## STUDY AREAS

- Accounting and Finance
- Association of Chartered Certified Accountants (ACCA)
- Banking, Finance and Investment
- Finance and Investment
- Forensic Accounting
- Forensic Audit and Accounting
- Professional Accounting (with ACCA tuition)

**SEE OUR FULL LIST OF COURSES**





# BUSINESS AND MANAGEMENT

South Wales Business School offers professionally recognised degrees and outstanding industry engagement opportunities.



Jamiel Ankail,  
Logistics and Supply Chain  
Management student on placement

## PROFESSIONAL COURSES

Making you more employable is at the heart of everything we do. All business courses at USW have been designed in consultation with industry and many are accredited by professional bodies.

CIM

Accredited Study Centre

CMI

Chartered  
Management  
Institute

idm

The Institute  
of direct  
and digital  
marketing

CIPR  
RECOGNISED  
COURSE

CIPD

CIPS  
Accredited

## PRACTICAL EXPERIENCE

We have partnerships with over 100 employers for employment-based teaching, including an opportunity to undertake a 10-week internship for all undergraduate students. You can also improve your employability and develop skills for your career path at the South Wales Business Clinic, offering consultancy to local businesses.

## CAREER OPPORTUNITIES

By the time you graduate from the South Wales Business School, you'll have the tools and confidence to contribute to the management of an organisation or start your own business.

**OUR MBA GLOBAL OFFERS  
AN OPPORTUNITY FOR UP TO  
EIGHT MONTHS' POSTGRADUATE-  
LEVEL WORK EXPERIENCE  
IN THE UK.**



## COURSES

We have a range of courses, so you can specialise in an area of industry that matches your career plans. Our flexible learning also means that on many of our undergraduate courses, you can choose where to specialise after completing your first year of study.

## STUDY AREAS

- Business and Management
- Hotel and Hospitality Management
- International Business and Management
- International Event Management
- International Logistics and Supply Chain Management
- MBA Global

**SEE OUR FULL LIST OF COURSES**



Hotel and Hospitality Management  
professional work placement at the  
five-star Celtic Manor Resort



# CHIROPRACTIC

Chiropractors play a vital role in the prevention, diagnosis and treatment of a huge number of health conditions, as well as rehabilitation. USW offers specialist skills, education and training to prepare you for practice.



**USW IS RATED  
TOP 10 IN THE UK  
FOR HEALTH  
PROFESSIONS  
COURSES**

(Guardian University Guide 2023)



Welsh Institute of Chiropractic,  
USW Pontypridd

## PROFESSIONAL RECOGNITION

This course is professionally recognised by the General Chiropractic Council (GCC) and the European Council on Chiropractic Education (ECCE). Our graduates are qualified to apply to register with the GCC, have the ability to work in European states, and are eligible to sit many entry examinations worldwide.



## PROFESSIONAL EQUIPMENT

Students learn in a professional environment with access to a digital X-ray suite, diagnostic ultrasound unit, DXA scanning unit, MRI facilities and 18 patient treatment rooms. Training is also supported by the 'Anatamage' – an advanced 3D anatomy visualisation table, a first for chiropractic education in Europe.



Welsh Institute of Chiropractic,  
USW Pontypridd

## PRACTICAL EXPERIENCE

Clinical experience is a major part of your training. The University is home to the Welsh Institute of Chiropractic – an outpatient clinic that offers diagnostic, assessment and treatment services to the public. Here, students can treat and manage real-life patients with musculoskeletal disorders, including a 13 month, professionally supervised placement.

Students also spend a week at a local hospital under the supervision of a Consultant Orthopaedic Surgeon. There are opportunities to work with University sports teams and provide care at external events such as triathlons.

**FIND OUT MORE  
ABOUT MCHIRO  
CHIROPRACTIC ON  
OUR WEBSITE.**





# COMPUTING AND DATA SCIENCE

All our courses benefit from direct industry engagement, so USW students gain the skills and support they need to excel in their chosen field, in a world that won't stop changing.

## PROFESSIONAL RECOGNITION

Many of our courses are accredited by professional bodies. These accreditations demonstrate the value we place on industry endorsement, as well as the quality of our courses, teaching and facilities.



**USW HAS BEEN NAMED UK CYBER UNIVERSITY OF THE YEAR FOR FOUR YEARS RUNNING, 2019-2022.**



Information Communication Technology Student

Cyber Security



## STUDY AREAS

- Artificial Intelligence
- Computer Science
- Cyber Security
- Data Science
- Digital Forensics

**SEE OUR FULL LIST OF COURSES**



## ADDITIONAL TRAINING AND ACCREDITATION

To enhance your employability, most of our undergraduate computing courses have extra certification available that is specific to each specialist area. This means that you can gain industry-recognised certificates as well as your degree.

## FACILITIES AND EXPERIENCE

To be career-ready, it's important you learn about your chosen profession in the right environment. As well as using industry-standard software and equipment, and learning through projects, there are opportunities for work experience as part of your course.



# DESIGN AND VISUAL PRODUCTION

At USW, you'll be part of a strong community of creatives who embrace change and solve problems. Our courses provide skills and experience, so you are career-ready when you graduate.

Our students and graduates work on the blockbuster BBC drama 'His Dark Materials' in Cardiff



**TOP IN WALES FOR ANIMATION AND GAMES.**

(Guardian University Guide 2023)

## SKILLS FOR YOUR PROFESSION

Our graduates have skills that employers look for and can demonstrate these through their showreels, portfolios and games. All students learn through a mixture of live project briefs and competitions, and are encouraged to undertake work experience as part of their course – anywhere in the world.

## PROFESSIONAL FACILITIES

USW is home to the **Film & TV School Wales** and is a major breakthrough in creative industries education. It has been developed in consultation with the Welsh Government and the wider creative industries sector. Film & TV School Wales brings together a range of film and television courses to provide students with the best opportunities to build a successful career in 21st century film and television.

To be career-ready, it's important you learn about your chosen profession in the right environment. Our studios are designed to emulate what happens in industry, including creative collaborative spaces and our industry pitching room. For technical skills, we have green screen studios, a motion capture suite, 3D printing labs, photography studios with an infinity cove, and editing and post-production suites.

## GREAT LOCATION: CARDIFF

Our campus is in the heart of Cardiff's creative industry and we see the city as our wider campus. This city centre location and our excellent links with industry provide an ideal launchpad for your career. Well known as a city of culture and entertainment, the opportunities for creative industries students in Cardiff are endless. Cardiff is also a major centre for TV and media production in the UK. With major production studios and the BBC on the doorstep, you'll have the potential to reach people from around the globe.

## STUDY AREAS

- Animation and Games
- Design and Communication
- Fashion
- Film and VFX
- Photography

**SEE OUR FULL LIST OF COURSES**



**USW IS RATED TOP FIVE IN THE UK FOR TEACHING QUALITY AND STUDENT EXPERIENCE IN ART AND DESIGN.**

(Times Good University Guide 2022)



Cardiff Campus -  
Green Screen Studio



# EDUCATION AND TEACHING

The education sector offers a range of satisfying and rewarding careers. If you want to inspire and support others to learn, then training in education might be right for you.



## REAL-LIFE LEARNING

We deliver Primary Initial Teacher Education in partnership with many excellent schools, to offer a diverse range of high-quality placement experiences. These partners also help inform what you learn at university, which ensures that the course accurately reflects teaching in the real world. Graduates have Qualified Teacher Status (QTS) to teach in the UK or overseas.



## STUDY AREAS

- Education
- Early Years Education and Practice
- Child and Adolescent Mental Health
- Leadership and Management (Education)
- Post Compulsory Education and Training
- Primary Initial Teacher Education
- SEN/ALN (Additional Learning Needs)
- SEN/ALN (Autism)
- Working with Children and Young People
- Youth and Community Work

SEE OUR FULL LIST OF COURSES



## PROFESSIONAL FACILITIES

To be career-ready, it's important you learn about your chosen profession in the right environment. We emulate school classrooms and flexible and outdoor learning spaces to support you to develop your practical skills and range of authentic learning experiences on campus.

## DIGITAL SKILLS

USW is an accredited Apple Regional Training Centre, so students have expert guidance and bespoke Apple-certified training to enhance teaching and learning. We're recognised in the prestigious 2020 Edtech Top 50 list for the work of our students to develop digital skills as future teachers.



100% OF THE ASSESSMENTS ON OUR UNDERGRADUATE DEGREES ARE COURSEWORK-BASED, MEANING NO EXAMS.





# ENGINEERING AND CONSTRUCTION

Engineers shape, innovate and create the world around us. We offer traditional and specialist engineering and construction courses, all giving students skills and experiences that prepare them for their career.



Wayne Kwenda, Aerospace graduate, works in Product Support Engineering at GE Aviation Wales

## PROFESSIONAL RECOGNITION

Many of our courses are accredited by professional bodies. These accreditations demonstrate how our degrees meet employer standards, as well as the quality of our courses, teaching and facilities. Many of our accreditations also provide the basis for achieving Chartered Engineer status following graduation and suitable work experience.



## ADDITIONAL TRAINING AND ACCREDITATION

We are the only university in the UK that has integrated the industry-standard aircraft maintenance qualification 'EASAPart-66' with an Honours degree.



Approval Number:  
UK.147.0111

## STUDY AREAS

- Aerospace Engineering
- Automotive Engineering
- Civil Engineering
- Construction Project Management
- Electronic Engineering
- Mechanical Engineering
- Renewable Energy and Sustainable Technology

**SEE OUR FULL LIST OF COURSES**



Aerospace Centre, USW



# HEALTHCARE

USW offers exceptional training, facilities and support for healthcare students. If you're caring, compassionate and have a commitment to helping people, we can help you start your career.



**WE OFFER ONLINE COURSES FOR HEALTHCARE PROFESSIONALS - SEE A FULL LIST ON OUR WEBSITE.**

Second year Nursing students doing simulated scenarios. They are each given a case to manage during a simulated nurse shift.

## LEARN FROM THE EXPERTS

You'll be taught by our lecturers and course leaders who've directly worked in a diverse range of Health and Social Care environments. From Paramedics to Mental Health Specialists, you'll benefit from their breadth of first-class expertise and experience

## FACILITIES AND EXPERIENCE

To be career-ready, it's important you learn about your chosen profession in the right environment. We value a hands-on approach to study. You'll experience simulated learning using a range of facilities including our Hydra-Minerva and Clinical Simulation suite to fully develop your skills, knowledge, and understanding of Health and Social Care.

## WORK PLACEMENTS

To prepare you for the world of work after you graduate, some of our courses allow a portion of your studies to take place in a range of clinical settings – this could be in a school, a hospital, community, or social care setting.

## STUDY AREAS

- Health and Social Care Management
- Nursing
- Public Health
- Professional Practice

**SEE THE FULL LIST OF COURSES**



**USW IS RATED TOP 10 IN THE UK FOR HEALTH PROFESSIONS COURSES.**

(Guardian League Table 2023)





# LAW AND CRIMINOLOGY

The legal and criminal justice systems offer valued career paths that make a difference to society. Our degrees provide the theory and practical skills you need to work in these fields.



Hafsa Abdul Hardi,  
LLB (Hons) Law student  
on placement



## LLB (HONS) LAW ACCELERATED ROUTE

Achieve an LLB (Hons) degree after just two years of full-time study.

## PROFESSIONAL RECOGNITION

All our undergraduate Law degrees are recognised as Qualifying Law Degrees (QLD) and are professionally accredited by the Solicitors Regulation Authority (SRA). This means that they satisfy the academic stage of training for progression to the professional stage to become a solicitor or a barrister.



## REAL-LIFE CASES

The Innocence Project gives our Criminology students a chance to work on real cases and investigations, with the potential to overturn a miscarriage of justice. We also operate a Cold Case Unit where students work with policing and missing person experts.

## PRACTICAL LEARNING AND PLACEMENTS

Work experience is a key part of study at USW and we encourage all students to spend time in the workplace. Law students can also volunteer at our Legal Advice Clinic, offering pro bono legal advice to local businesses and members of the community.

## STUDY AREAS

- Criminology and Criminal Justice
- Law
- Law (Accelerated Route)
- International Commercial Law

SEE OUR FULL LIST OF COURSES



Students gaining practical skills in the Moot Court, USW Pontypridd



# MEDIA AND PERFORMANCE

USW is in the perfect location for you to begin your career in media and performance. Here, you'll be part of a strong creative community that thrives from opportunities on campus and in the city.

**OUR GRADUATES WORK AT NETFLIX, DISNEY, SKY, AND THE BBC.**



Media Production Studio, USW Cardiff

## SKILLS FOR YOUR PROFESSION

Our graduates have skills that employers look for and can demonstrate these through their innovative portfolios and performances. All students learn through a mixture of live competitions, projects and briefs, and are encouraged to undertake work experience as part of their course.

## PROFESSIONAL FACILITIES

To be career-ready, it's important you learn about your chosen profession in the right environment. Our studios are designed to emulate what happens in the industry, and you'll work with students from other courses for an inter-disciplinary experience that mirrors real life. For technical skills, there's a multi-camera HD TV studio and radio studios, a theatre, dance studios, rehearsal spaces, and nine music recording studios – all on campus.

## GREAT LOCATION: CARDIFF

Our campus is in the heart of Cardiff's creative industry and we see the city as our wider campus. This city centre location and our excellent links with industry provide an ideal launchpad for your career. Well known as a city of culture and entertainment, the opportunities for media and performance students in Cardiff are endless. Cardiff was recently named the UK's first Music City and it's a key location for media in the UK, with major outlets in easy reach of campus, including the BBC.

## STUDY AREAS

- Journalism and Media
- Music and Sound
- Theatre and Drama
- Film and VFX

**SEE OUR FULL LIST OF COURSES**



Music Recording Studio, USW Cardiff



# PSYCHOLOGY, PSYCHOTHERAPY AND COUNSELLING

USW is recognised for excellent teaching and facilities that prepare students to become professional practitioners, ready for careers that make a difference to people's lives.

## PROFESSIONAL RECOGNITION

Many of our degrees are accredited by the relevant professional body. These accreditations demonstrate that what you learn is excellent preparation for your chosen field, as well as the quality of our courses, teaching and facilities.



Psychology Suite, USW Pontypridd



Psychology



## STUDY AREAS

- Behaviour Analysis and Therapy
- Clinical Psychology
- Creative and Therapeutic Arts
- Professional Doctorate
- Psychology

### SEE OUR FULL LIST OF COURSES



## PRACTICAL LEARNING AND PLACEMENTS

Our campuses have specialist resources for psychology and counselling so you can develop specialist techniques. All undergraduate degrees at USW have elements of work experience built in. Our Psychology Plus scheme, for example, offers clinical experience at our clinic on campus, specialist short courses, professional certificates and work placements.

## ON-CAMPUS CLINICS

The USW Behaviour Analysis Clinic offers clinical services to the public with a focus on treating behavioural challenges associated with a wide range of disorders. The USW Therapy Centre is a counselling service for people in the local area. Both of these serve the community and offer students valuable experience.



# SOCIAL POLICY AND HUMANITIES

Our degrees are designed to make a difference to the lives of people and communities around the world. Your studies at USW will give you the skills and insight you need to help others and lead social change locally and globally.



Muhanned Kalash, Libya Chevening Scholar, Social Policy



**MORE THAN 80% OF USW'S RESEARCH IN SOCIAL WORK AND SOCIAL POLICY HAS A REAL-LIFE IMPACT THAT'S RATED WORLD LEADING OR INTERNATIONALLY EXCELLENT.**

(REF2021)

## PRACTICAL EXPERIENCE

Gaining skills for the workplace is a key part of our courses. We have strong partnerships with employers and external organisations to provide work experience, placements and networking opportunities. As well as learning from your lecturers, you'll engage with people who are working in the sector too.

## EMPLOYABILITY

Making you more employable is at the heart of everything we do. Modules have clear outcomes that are linked to the skills employers want from graduates. You'll develop analytical skills that will prepare you for a range of careers, as well as communication and digital skills.

## TOMORROW MATTERS

The USW Tomorrow Matters lecture series addresses some of the most complex and pressing challenges facing the world today. We invite inspiring, high-profile speakers to campus who have witnessed and been participants in major world events. Find out more on our Tomorrow Matters web pages. Notable speakers have included Helen Clark, Former Prime Minister of New Zealand, and Lord Karan Bilimoria, Global Business Leader and President of the Confederation of British Industry.

## STUDY AREAS

- English
- Health and Social Care Management
- History
- Policing and Security
- Public Services
- Sociology

**SEE OUR FULL LIST OF COURSES**



Sara Daniels, BSc (Hons) Sociology



# SCIENCE

A science degree provides a career for life. At the University of South Wales, you'll gain the right skills, knowledge and practical experience to be an attractive candidate to employers.



**USW IS RATED TOP 15  
IN THE UK FOR  
FORENSIC SCIENCE.**

(Guardian League Table 2023)



## FACILITIES AND EXPERIENCE

To be career-ready, it's important you learn about your chosen profession in the right environment. We value a hands-on approach to study. You'll learn in a purpose-built learning environment and undertake practical work in specialist laboratories on campus. As well as using industry-standard software and equipment, and learning through projects, there are opportunities for work experience as part of your course.

## FIELDWORK

Many of our courses offer exciting fieldwork opportunities, bringing to life what you learn in the classroom. As well as making use of the varied habitats on our doorstep, you may travel much further afield. In recent years, locations have included Honduras, South Africa, Mexico and, more locally, the Brecon Beacons and Pembrokeshire National Parks.

## STUDY AREAS

- Biological Science
- Pharmaceutical Science
- Environmental Science
- Forensic Science
- Medical Sciences
- Renewable Energy and Sustainable Technology

**SEE OUR FULL LIST OF COURSES**



## PROFESSIONAL RECOGNITION

Many of our courses are accredited by professional bodies. These accreditations demonstrate that what you learn is excellent preparation for your chosen field, as well as the quality of our courses, teaching and facilities.





# SPORT

We have courses that reflect different aspects of the sport industry, at many different levels. From coaching and performance to science and therapy, we help students from all over the world prepare for the sporting career they want.

**USW IS THE ONLY UNIVERSITY IN ENGLAND AND WALES TO OFFER A FULL-SIZE INDOOR 3G PITCH BUILT TO FIFA PRO AND WORLD RUGBY STANDARD, FOR GUARANTEED TRAINING ALL YEAR ROUND.**



Indoor training pitch, USW Sport Park

## PROFESSIONAL RECOGNITION

Many of our courses are accredited by professional bodies. These accreditations demonstrate that what you learn is excellent preparation for your chosen field, as well as the quality of our courses, teaching and facilities.

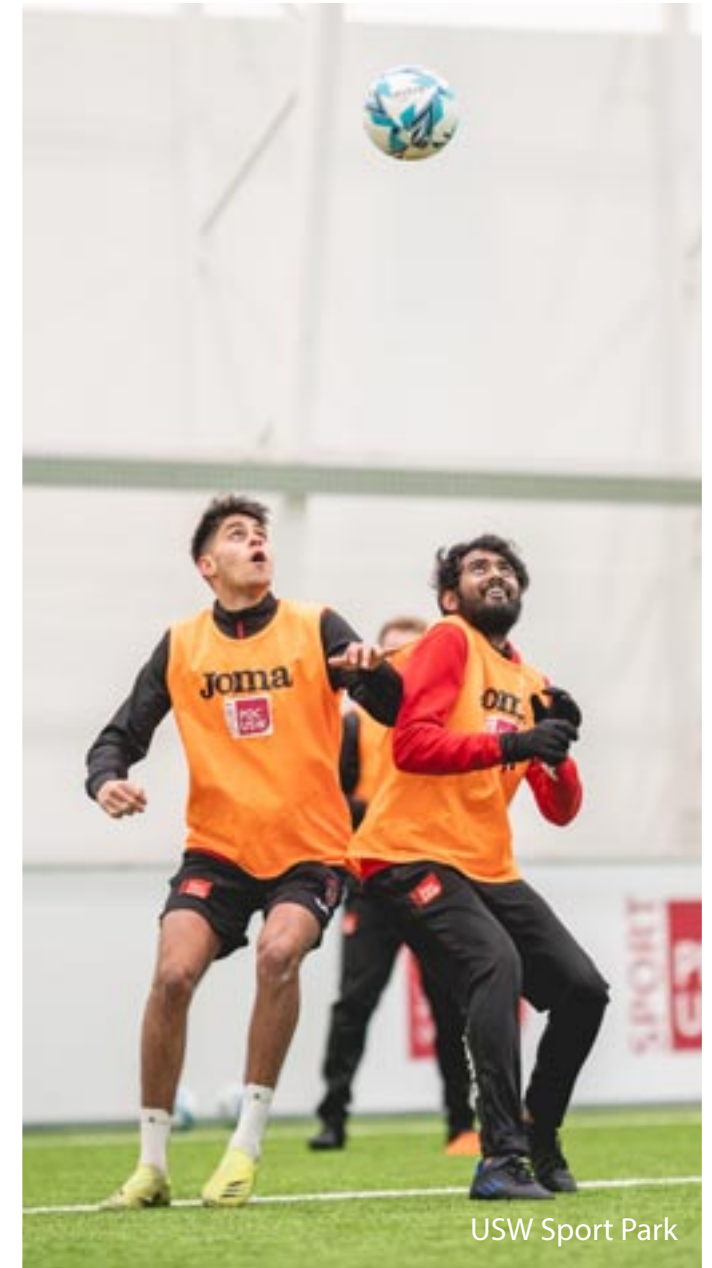


## PROFESSIONAL FACILITIES

To be career-ready, it's important you learn about your chosen profession in the right environment. USW Sport Park is an elite training facility that attracts professional clubs and associations from all over the world. We value a hands-on approach to study and all students are provided with high-quality sportswear to ensure you are professionally equipped.

## PRACTICAL EXPERIENCE

We have many partnerships with national governing bodies, professional sport teams and local businesses, which provide work experience opportunities that match your course and interests. Plus, all of our coaching courses are mapped to industry standards to offer you an industry-recognised qualification in addition to your degree.



USW Sport Park

## STUDY AREAS

- Football Coaching and Performance
- Rugby Coaching and Performance
- Sport and Exercise Therapy
- Sports Coaching and Performance
- Sport, Health and Exercise Science
- Strength and Conditioning

**SEE OUR FULL LIST OF COURSES**





# YOUR PATHWAY TO A BETTER TOMORROW



The University of South Wales is working in partnership with QA Higher Education (QAHE) to deliver an International Pathway College at our Pontypridd campus.

These pathway programmes give you the foundation to begin your studies at USW. With our specialist support, you can develop your English language ability and academic study skills in a small, supportive learning environment. After successfully completing the programme, pathway students can progress to undergraduate degree study.

Pathway foundation programmes lead to degree study in Business and Social Science, Creative Industries, Computer Science, Engineering, Sports Science, or Applied Science, so you can choose the pathway that's right for your goals.

Pathway programmes are validated by the University of South Wales and taught by QA Higher Education staff.

## FIND YOUR PATHWAY AT USW

[qa.southwales.ac.uk](http://qa.southwales.ac.uk)



## WHAT WILL YOUR PATHWAY LEAD TO?

### International Foundation Programme

Once you successfully complete the International Foundation Programme you are guaranteed to progress to the first year of the degree programme you applied for at the University of South Wales.

A small number of our degree programmes have additional requirements for progression such as submission of a satisfactory police check. Any additional requirements are explained on the website. Tuition fees for 2024/25 have not yet been confirmed but the fees below will give you an approximate idea of what you can expect to pay for the course. For the latest tuition fees, visit: [qa.southwales.ac.uk/dates-and-fees](http://qa.southwales.ac.uk/dates-and-fees)

	START DATES	TUITION FEE - 2 TERMS (APPROXIMATE)	TUITION FEE - 3 TERMS (APPROXIMATE)
International Foundation Programme	October and January	£11,500	£14,000

### International Year One Business

Once you successfully complete the International Year One Business, you will progress to the second year of the business degree programme you applied for at the University of South Wales. Tuition fees for 2024/25 have not yet been confirmed but the fees below will give you an approximate idea of what you can expect to pay for the course. For the latest tuition fees, visit: [qa.southwales.ac.uk/dates-and-fees](http://qa.southwales.ac.uk/dates-and-fees)

	START DATES	TUITION FEE 2024-25
International Year One Business	October and January	£14,950

## HOW TO FIND YOUR PATHWAY

There is a degree selector on our website to help you find the foundation pathway you need to progress to your degree of choice: [qa.southwales.ac.uk/progression](http://qa.southwales.ac.uk/progression)

If you meet the necessary English language requirements, you'll be able to apply for a joint CAS for the whole of your foundation programme and undergraduate study at University of South Wales. This means you will only need to apply for your Student Route visa once for your entire UK study, with no additional English testing requirements.



**CHECK OUT THE DEGREE SELECTOR ON OUR WEBSITE: [QA.SOUTHWALES.AC.UK](http://QA.SOUTHWALES.AC.UK)**



# FEES AND SCHOLARSHIPS

We understand that studying in the UK is a big financial investment, so we make studying at USW affordable by offering:

- **COMPETITIVE TUITION FEES**
- **GENEROUS SCHOLARSHIPS**
- **CONVENIENT PAYMENT PLANS**



UNDERGRADUATE DEGREES: 2024-25	TUITION FEE	SCHOLARSHIP
Degree/Foundation Degree courses in Business or Creative Industries (per year)	£14,950	£1,500-£2,500
Degree/Foundation Degree courses in Computing, Engineering, Sciences or Education (per year)	£15,260	£1,500-£2,500
Degree placement year	£2,860	N/A

POSTGRADUATE DEGREES: 2024-25	TUITION FEE	SCHOLARSHIP
MBA Global/LLM Legal Practice Course	£16,900	£2,000-£2,500
MBA/MA/MSc/LLM in Business, Creative Industries or Law	£15,850	£2,000-£2,500
MA/MSc in Computing, Engineering, Sciences or Education	£16,000	£2,000-£2,500

RESEARCH: 2024-25	TUITION FEE	SCHOLARSHIP
PhD	£16,900	£2,000-£2,500
DBA	£15,850	£2,000-£2,500

## SCHOLARSHIPS

You will be considered for an international scholarship automatically when we receive your application to study; you don't need to make a separate scholarship application. You will receive confirmation of a scholarship with your offer letter and it applies to all years of study.

Scholarships and discounts do not apply to sponsored students, those studying a placement year or English language programmes. Scholarships may be withdrawn if conditions of the scholarships are not adhered to.

### International scholarships

Partial tuition scholarships of up to £2,500 are available to self-funded international students for each year of study:

#### Chancellor's International Development Scholarship

Undergraduate and postgraduate students from the following regions are eligible for a scholarship of £2,500:

- Africa • Latin America • South Asia • South East Asia • Central Asia and Turkey • Caribbean • Lebanon • Norway

#### Commonwealth and Chevening Scholarships

USW is a popular destination for Commonwealth and Chevening scholars and we offer a number of general and partnership scholarships. For more information visit: [www.southwales.ac.uk/international](http://www.southwales.ac.uk/international)

## TUITION FEES

- Fees are charged per academic year.
- Accommodation and living costs should be calculated separately.
- Please refer to course web pages for any additional field trip fees: [www.southwales.ac.uk/courses](http://www.southwales.ac.uk/courses)

### Payment schedule

Students studying Pre-sessional English Language Programmes must pay the balance of fees in full before enrolment.

International students studying undergraduate and postgraduate courses must pay a minimum 50% of fees before enrolment. Please see your offer letter for more details.

### Payment options

1. An early payment discount of £300 may be available upon full payment of fees on or before enrolment. Terms and conditions apply.
2. Payment of the balance of fees in monthly instalments.

For further information about payment schedule of tuition fees, visit: [www.southwales.ac.uk/international](http://www.southwales.ac.uk/international)

INFORMATION FOR EU STUDENTS



## NORTH AMERICAN LOANS

### USA

If you are a US citizen, you may be able to take out a loan to meet the cost of your studies. The University of South Wales is a participating institution in the William D. Ford Federal Direct Loan Program. Money is loaned by the US Department of Education directly to students via their schools. The University is certified to originate Direct Loans for full-time Bachelor or graduate degrees only. The School Code for the University is: G35473

### Canada

The University of South Wales is a designated institution that enables students from British Columbia and Ontario to attend and still be eligible for student financial assistance from their home province.

For more information about eligibility and how to apply, please visit British Columbia Student Aid [www.studentaidbc.ca](http://www.studentaidbc.ca) or Ontario Student Assistance Program: [www.ontario.ca/page/osap-ontario-student-assistance-program](http://www.ontario.ca/page/osap-ontario-student-assistance-program)

## EU STUDENTS: FEES AND SCHOLARSHIPS

The University is proud of our links to Europe, and the friendly and multicultural atmosphere at USW is enhanced by our diverse student and staff community from Europe and around the world.

For EU, other EEA and Swiss nationals starting a course in September 2024, course fees will be the equivalent to our international fees.

However, the University is committed to making fees for EU students as affordable as possible. We offer an attractive range of scholarships for EU students. Eligible EU students starting a course with USW in September 2024 will be automatically awarded a scholarship, which will bring the tuition fee amount in line with the fee paid by UK students. This will apply for the duration of your course. EU students studying undergraduate and postgraduate courses must pay a deposit of at least £3,000 before enrolment. Please visit [www.southwales.ac.uk/international](http://www.southwales.ac.uk/international) for further information about our EU scholarship scheme.

Please note the Common Travel Area (CTA) means that Ireland and the UK will take steps to ensure Irish and British citizens can continue to access further and higher education on the same fee basis in the future, and will not need to apply for a visa. For details, see: [www.dfa.ie/brexit](http://www.dfa.ie/brexit)

## EUROPEAN PARTNERS

The University has a strong network of European partner institutions through which students are able to access opportunities to study abroad. Students from USW's partner universities who are interested in studying at USW should contact their university's International/Student Exchange (Outgoing) Office for advice on the process.

# LIVING COSTS IN SOUTH WALES

South Wales offers great value for money. Food, entertainment, accommodation and other day-to-day costs are likely to be lower than in many other parts of the UK. However, it is vital that all students prepare their finances before they attend university.

The amount of money you need during your time studying with us will vary depending on the sort of lifestyle you lead. The UKVI requires all students applying for a visa for programmes of nine months or more to provide evidence of £9,207 plus any unpaid course fees for the first year.



**FOR THE LATEST INFORMATION ON FEES AND SCHOLARSHIPS, VISIT OUR WEBSITE.**





# ENTRY REQUIREMENTS

We recognise academic qualifications from around the world. You can find requirements for your country on our website: [www.southwales.ac.uk/international/your-country](http://www.southwales.ac.uk/international/your-country)

## English language

The University recognises a number of English language qualifications that include:

- IELTS with an average overall score of 6.0 with a minimum of 5.5 in each component\*
- GCSE pass in English at grade C or above
- TOEFL with a score of 72 overall and a minimum of 18 in reading, 17 in listening, 20 in speaking and 17 in writing
- PTE Academic and PTE Academic UKVI with score of 64 overall and 59 in each component

For more information and a complete list of English qualifications we accept, visit:

[www.southwales.ac.uk/international/courses/ielts-english-programmes-requirements](http://www.southwales.ac.uk/international/courses/ielts-english-programmes-requirements)

Please note, we offer English language preparation courses if your IELTS is below the course entry requirement. See page 70.

\*A very small number of USW's programmes require a higher IELTS (or equivalent) score. Please check individual courses for details. Courses below undergraduate level will require a UKVI SELT IELTS.

## Considering your application

To consider your application, we require the following documents:

- Academic transcripts and certificates (include documents from both your high school and university or college qualifications)
- Evidence of English language ability (IELTS or equivalent)
- Academic/employment reference letter
- Personal statement

We recommend submitting all of these documents when you submit your application, but if you don't have them available, we may still be able to make you a conditional offer to study with us.

A conditional offer means you still need to meet some requirements to study with us – usually exam results. Your offer letter will state what you need to submit in order to obtain an unconditional offer. Other conditions may include submitting a work reference or your transcripts, for example.

## Our trusted partners around the world

We have an extensive network of trusted agents who work with students in countries around the world on our behalf. An agent in your country can help you with the application and admissions process. You will find their contact details on the relevant 'Your Country' page on our website.

VISIT 'YOUR COUNTRY' WEB PAGES



# APPLYING TO USW



Visit [www.southwales.ac.uk/international](http://www.southwales.ac.uk/international) to find out more about our courses, location, fees and scholarships. If you require a foundation year, we have partnered with QAHE to deliver pathway programmes with routes into Business and Social Science, Creative Industries, Computer Science, Applied Sciences, Sports Science, and Engineering. For more information, turn to page 62.



If you still have any questions, contact our Admissions Team at [UGglobal@southwales.ac.uk](mailto:UGglobal@southwales.ac.uk) (Undergraduate enquiries), [PGglobal@southwales.ac.uk](mailto:PGglobal@southwales.ac.uk) (Postgraduate enquiries), or one of our representatives in your country to discuss any questions you may have – visit Your Country pages at: [www.southwales.ac.uk/international/your-country](http://www.southwales.ac.uk/international/your-country)



Apply for your course online: [www.southwales.ac.uk/apply](http://www.southwales.ac.uk/apply)



If you have submitted a complete application we will aim to respond to you with an offer to study within five working days. This may take longer if you haven't submitted all the documentation we require, or if you need an interview. If your offer is conditional, please send us the information we require as soon as possible and we will update your offer to an unconditional offer.



Instructions on how to accept your offer will be included in your offer email. Your Unconditional offer email will tell you how to obtain a CAS to apply for your student visa (if required).



Our Accommodation Team will send you an email inviting you to apply once you hold a firm offer of a place on your course.

**IF YOU STILL HAVE ANY QUESTIONS ABOUT THE ADMISSIONS PROCESS,**

please email the Admissions Team at: [international.admissions@southwales.ac.uk](mailto:international.admissions@southwales.ac.uk)



Join us for the International Welcome Programme!



# ENGLISH LANGUAGE COURSES

The USW Centre for International English offers English language courses for students who do not meet the English language requirements for their course. These pre-sessional courses also help students develop academic and social skills in the university environment.



**THE TEACHING STAFF ARE LOVELY PEOPLE. THEY HELPED ME NOT ONLY WITH ENGLISH, BUT ALSO WITH OTHER ISSUES I HAD WHEN I FIRST ARRIVED AS EVERYTHING WAS SO NEW.**

**Ziwen Yao**

10 week Pre-sessional English Language Programme and BA (Hons) International Business (Top Up)



These intensive courses will improve your English and academic skills, and help you communicate in an English-speaking environment.

- Courses are taught by fully qualified and professional English language teachers.
- The programme you are offered will depend on your English level and academic qualifications.
- We even support students after their English course has finished. You will also be able to attend in-session English language classes free of charge, to support you throughout your studies.
- Courses are taught at our Pontypridd Campus.
- We strongly recommend you allow at least 10 weeks (300 hours of English) to improve your English level by up to one (1.0) IELTS band (or equivalent).

## Entry requirements

- Applicants must hold an offer for a course at USW (undergraduate or postgraduate levels).
- Applicants must satisfy the English language requirements as detailed in the table below.
- International applicants must hold a UK Visas and Immigration (UKVI) IELTS, taken at an approved UKVI SELT IELTS centre.

**FOR INFORMATION ON UKVI SELT IELTS CENTRES ACROSS THE WORLD, VISIT [WWW.GOV.UK](http://WWW.GOV.UK) OR CONTACT YOUR COUNTRY REPRESENTATIVE FOR FURTHER INFORMATION.**



CURRENT ENGLISH LANGUAGE LEVEL	RECOMMENDED PRE-SESSIONAL ENGLISH LANGUAGE PROGRAMME	DATE (START-END)	TUITION FEE 2024-25
IELTS 4.5* or equivalent (with a minimum of 4.0 in all components)	15 weeks	May-September OR August-December	£6,000 £6,360
IELTS 5.0* or equivalent (with a minimum of 4.5 in writing and 4.0 in all other components)	10 weeks	June-September OR September-December	£4,100 £4,350
IELTS 5.5* or equivalent (with a minimum of 5.5 in writing and 5.0 in all other components)	5 weeks	January-February OR August-September	£2,200 £2,330

\*Students applying for a course requiring a higher IELTS score than 6.0 may require a longer pre-sessional English course. Please note that the fees stated above are subject to change. For full terms and conditions, visit our website: [www.southwales.ac.uk/money](http://www.southwales.ac.uk/money)



# STUDENT SUPPORT



For wellbeing, information and advice, whatever the issue, there's a network of people at USW ready to help you.

## International and EU student support

We offer excellent support and advice at every stage of your journey – from making your application to graduation and beyond. Our Immigration and International Student Advice team can give you information about non-academic issues such as immigration and daily life in the UK, plus they arrange lots of events and social activities. To find out more, visit: [www.southwales.ac.uk/intsupport](http://www.southwales.ac.uk/intsupport)



**Disability Services** provide information and advice, and co-ordinate disability-related support. Whether you have a physical, sensory or unseen disability, or a specific learning difficulty, we will draw up a support plan to ensure you receive the learning support you need.

**Religion:** The Chaplaincy offers an open and affirming service to all USW students. We offer confidential guidance and support to students whether they are religious or not.

**Wellbeing Service** offers free advice, counselling and support. We are concerned with your overall wellbeing, including physical and mental health, social welfare, and ways to improve these.

**Residence Support Team** looks after students living in Halls and are a useful contact for any Halls-related issues.

**Student mentoring** aims to make your start to university life easy and enjoyable, with practical advice and support.

**Student Money Advice** can help you manage your money and offer advice on student funding.

**USW Careers** can help with all things related to your career and advise you how to get the most from your studies – turn to page 11 for more.



**STUDYING AT THE UNIVERSITY OF SOUTH WALES HAS ALLOWED ME TO MAKE FRIENDS FROM DIFFERENT COUNTRIES, CULTURES AND BACKGROUNDS, I FEEL I HAVE DEVELOPED INTO A WELL-ROUNDED INDIVIDUAL.**

**Filipe Galamba**  
Portugal, MA Journalism





# VISA AND IMMIGRATION PROCEDURES

## Visas to study in the UK

- It is important you read the University's guide to visas and application processes: [www.southwales.ac.uk/international/visas-and-pre-arrival](http://www.southwales.ac.uk/international/visas-and-pre-arrival)
- You can apply for a Student Visa six months before the start of your course and you will need a Confirmation of Acceptance to Study (CAS) from USW. We can issue this statement up to six months before your course start date.
- Our Immigration and International Student Advice team (IISA) can guide you through the process of applying for a visa under the Student Route.
- The visa application can be broken down into four stages:
  - ✔ Gather the documents needed for your application, and wait for your finances to mature.
  - ✔ Complete the Student Route online form and pay all application fees due.
  - ✔ Book and attend an appointment at a Visa Application Centre OR use the UKVI ID App to complete the biometrics process.
  - ✔ Post your documents to the Embassy.
- A standard visa application usually takes three weeks to process, though this can be longer at peak times (September/October). Some countries offer a Priority Visa Application Service that takes three to five days. You can check the current visa processing time for your country at: [www.gov.uk](http://www.gov.uk)

## Immigration Health Surcharge (IHS)

International students in the UK must pay a health surcharge if their visa is for six months or longer. For information, visit our website: [www.southwales.ac.uk/international/visas-and-pre-arrival/visas](http://www.southwales.ac.uk/international/visas-and-pre-arrival/visas)

## Bringing your family

If you want to bring family members to the UK with you as your dependents, and your course meets the UKVI eligibility criteria, read the family support information on our website for information and guidance: [www.intadvice.southwales.ac.uk/welcome/family-support-information](http://www.intadvice.southwales.ac.uk/welcome/family-support-information)

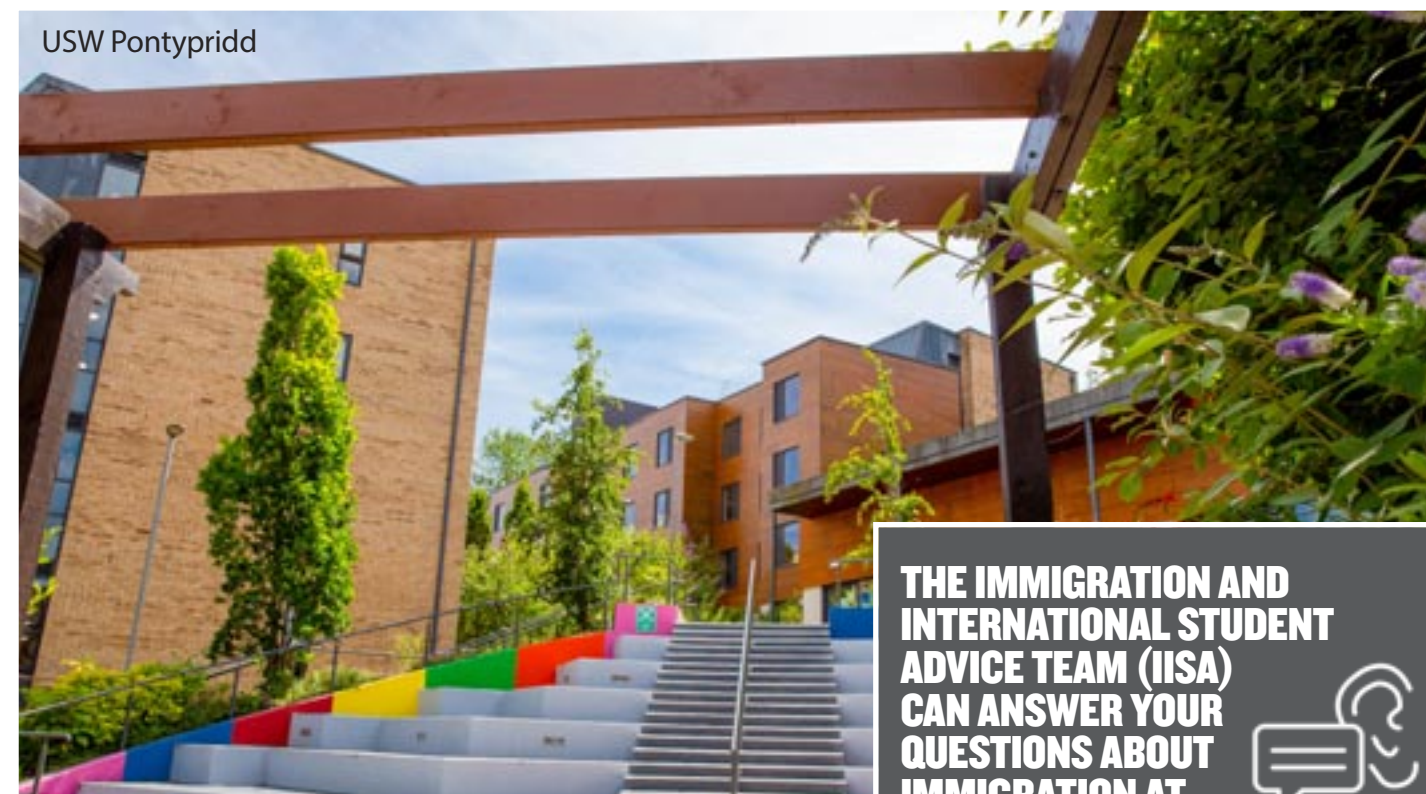
## Graduate Immigration Route

Find out more about the Graduate Immigration Route, which allows eligible international students to stay in the UK to work full-time for two years after graduation if you have completed a Bachelors or Masters degree, and for three years if you have completed a PhD.

**FOR DETAILED INFORMATION ABOUT VISAS, PLEASE VISIT OUR WEBSITE.**



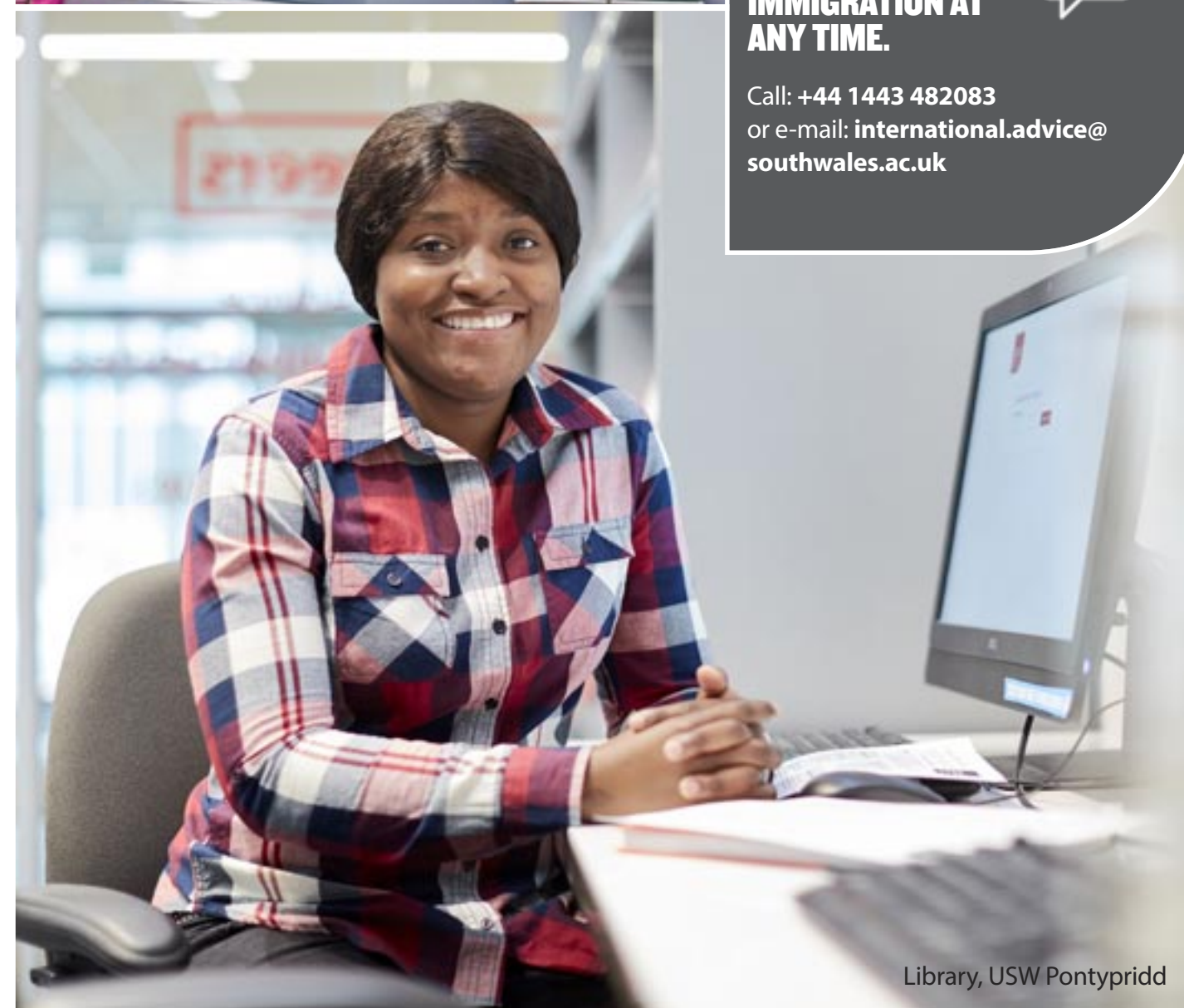
USW Pontypridd



**THE IMMIGRATION AND INTERNATIONAL STUDENT ADVICE TEAM (IISA) CAN ANSWER YOUR QUESTIONS ABOUT IMMIGRATION AT ANY TIME.**



Call: +44 1443 482083  
or e-mail: [international.advice@southwales.ac.uk](mailto:international.advice@southwales.ac.uk)



Library, USW Pontypridd



# ARRIVING AT USW



## HOW DO I SIGN UP?

Being part of the IWP is easy. Visit [www.southwales.ac.uk/international](http://www.southwales.ac.uk/international) for more information and an online booking form.



## INTERNATIONAL WELCOME PROGRAMME (IWP)

IWP is primarily a social programme for international and EU students each September and February. These events will help you make friends and get used to being in the UK before your academic induction and enrolment.

- There are lots of trips and activities, and you can choose activities and information sessions that interest you, like Living and Learning in the UK, Keeping Safe Under the Student Immigration Route, and Driving in the UK.
- Social activities can include trips, cooking, picnics, quizzes, city walks or guest lectures from local historians. You could even learn new skills such as world dance, Zumba or drumming! Whether you like to party or you prefer something a little quieter, there will be something for everyone.
- Registration and most of the activities are free, though there is a small charge for some of the optional coach trips and meals.
- As well as all the fun activities, staff and students will show you around campus, make sure you have somewhere to live, and help you with opening a bank account.
- The IWP is also an opportunity to meet other new students, as well as students who have been here a while and can share their experiences. It will help you prepare for the start of term and feel at home here.



## ARRIVAL SERVICES

To make your travel to USW as easy as possible, we organise arrival services for when you first arrive in the UK.

These services are available throughout the year from Cardiff International Airport (CWL) and Heathrow Airport (LHR), London.



We recommend you arrange your flight to land at Cardiff International Airport (CWL). On request, we can arrange a free taxi service from the airport to your accommodation at USW.

If you arrive at London Heathrow (LHR), we can arrange for a University representative to meet you and help you with the rest of your journey to USW. Please note, this is not a pick-up service and our representative will neither transport you nor travel with you to the University.

It is important to remember that you must request the arrival services at least five working days before you travel. For more information and a booking form, visit: [www.southwales.ac.uk/arrivalservices](http://www.southwales.ac.uk/arrivalservices)







Newport Campus

## WHY GO TO UNIVERSITY?

From improved career prospects to self-confidence and independence, there are many reasons to go to university:

- Gain a qualification that's internationally recognised. UK higher education qualifications are recognised and respected by employers worldwide.
- Develop the essential skills needed for a career and working life: communication, organisation, time management, team work, leadership and problem solving.
- We prepare our students to start their career through the curriculum – employability is built in.
- Teaching at USW is informed by employers and what happens in the workplace.
- Increased earning potential. Having a UK degree makes you more attractive to employers, you'll have a greater choice of jobs and you'll earn more. 95% of USW graduates were in work or further study within six months of leaving university (DLHE 2018).

## WHY CHOOSE USW?

South Wales and USW are wonderful places to live and study. We'll support your child's academic progress, ensure their safety and prepare them for their future career.

South Wales is full of life and things to do, and yet it is safe. The capital city, Cardiff, is not too big and you can walk everywhere, there are masses of green spaces, and it is on the coast.



Also, Cardiff has been awarded the Purple Flag for offering an entertaining, diverse, safe and enjoyable night out.

### FOR ADVICE AND WELLBEING, WE HAVE SPECIALIST TEAMS READY TO HELP YOUR CHILD:

- Immigration and International Student Advice
- Student Money Advice
- USW Careers
- Student Mentoring
- Study Skills Service
- The Chaplaincy
- Disability Services
- Students' Union
- Campus Security



Practical session, USW Pontypridd



# INFORMATION FOR PARENTS

University is a life-changing experience for parents as well as students. But rest assured, we do our utmost to provide a safe and supportive environment in which your child can thrive.



# ACCOMMODATION



“  
**I LIVED IN HALLS ON CAMPUS. IT'S CONVENIENT AS IT'S VERY CLOSE TO CLASSES, THE LIBRARY, STUDENTS' UNION, AND SPORT CENTRE.**  
 Sharif Khoshnaw  
 USW Graduate



Halls of Residence, Newport



USW Pontypridd

We want you to feel at home while you are studying at USW, so we have a range of good quality accommodation.

## PONTYPRIDD HALLS

USW has Halls on campus at Pontypridd, so you can live and study in a friendly, community atmosphere that our students love. There are nearly 1,200 rooms of different sizes, and 20 self-contained studio flats.

- From £100 per week\*
- Own room with en suite shower and toilet
- Shared kitchen, dining and living area
- Self catering
- Internet access and bills included
- Insurance for personal belongings
- Smart phone app/card operated laundry
- Staffed 24 hours a day
- Resident Life Programme

## CARDIFF HALLS

We work with a number of private providers in the city centre, all of which are close to USW Cardiff. Typically, rooms range from £140 per week\* and include the following:

- Own room with en suite shower and toilet
- Shared kitchen, dining and living area
- Self catering
- Internet access and bills included
- Study and social space, with free printing
- USW welfare support
- On site laundry facilities
- Staffed 24 hours a day

## NEWPORT HALLS

We work with private provider, CLV, to offer modern Halls of Residence close to campus. There are a range of rooms to choose from.

- From £139 per week\*
- Own room with en suite shower room and toilet
- Shared kitchen
- Self catering
- Common room with Sky TV, including Sky Sports
- Internet access and bills included
- Insurance for personal belongings
- On site laundry facilities
- Staffed 24 hours a day

## PRIVATELY RENTED ACCOMMODATION

If you don't want to live in Halls, private accommodation could be an option. We keep a database of registered landlords whose properties meet standard and safety regulations:

[www.southwales.ac.uk/international/accommodation/](http://www.southwales.ac.uk/international/accommodation/)

## HOW WILL I PAY?

International and EU students with no settled/pre-settled status, who have chosen to live at Treforest campus, must pay Halls rental in full at the beginning of the academic year. International and EU students must pay Halls rental for Newport and Cardiff campuses in full at the beginning of the year, unless they have a UK guarantor. Students staying in a privately rented house should refer to their contract for payment details.

**WE HAVE LOTS OF ACCOMMODATION OPTIONS, SO YOU CAN CHOOSE WHAT SUITS YOU BEST. OUR ACCOMMODATION TEAM WILL SEND YOU AN EMAIL INVITING YOU TO APPLY ONCE YOU HOLD A FIRM OFFER OF A PLACE ON YOUR COURSE.**

**TAKE A TOUR OF OUR ACCOMMODATION ONLINE:**  
[www.southwales.ac.uk/international/accommodation/](http://www.southwales.ac.uk/international/accommodation/)



\* Based on 2023-24 prices. Please check our website for the latest information.



Want to know more about living in South Wales or what it's like to study at USW? Message one of our friendly student ambassadors – they're here to help: [www.southwales.ac.uk/chat-to-our-students](http://www.southwales.ac.uk/chat-to-our-students)



# STUDENT LIFE

You are expected to study, but your time at university should also be fun. Whatever your interests, there is a huge range of clubs, societies and a diverse social life at USW.



Students' Union Building, USW Pontypridd

## STUDENTS' UNION

The Union is where you can play sport, make new friends from all over the world, get advice, find work and have your voice heard. You automatically get membership of the Students' Union when you enroll.



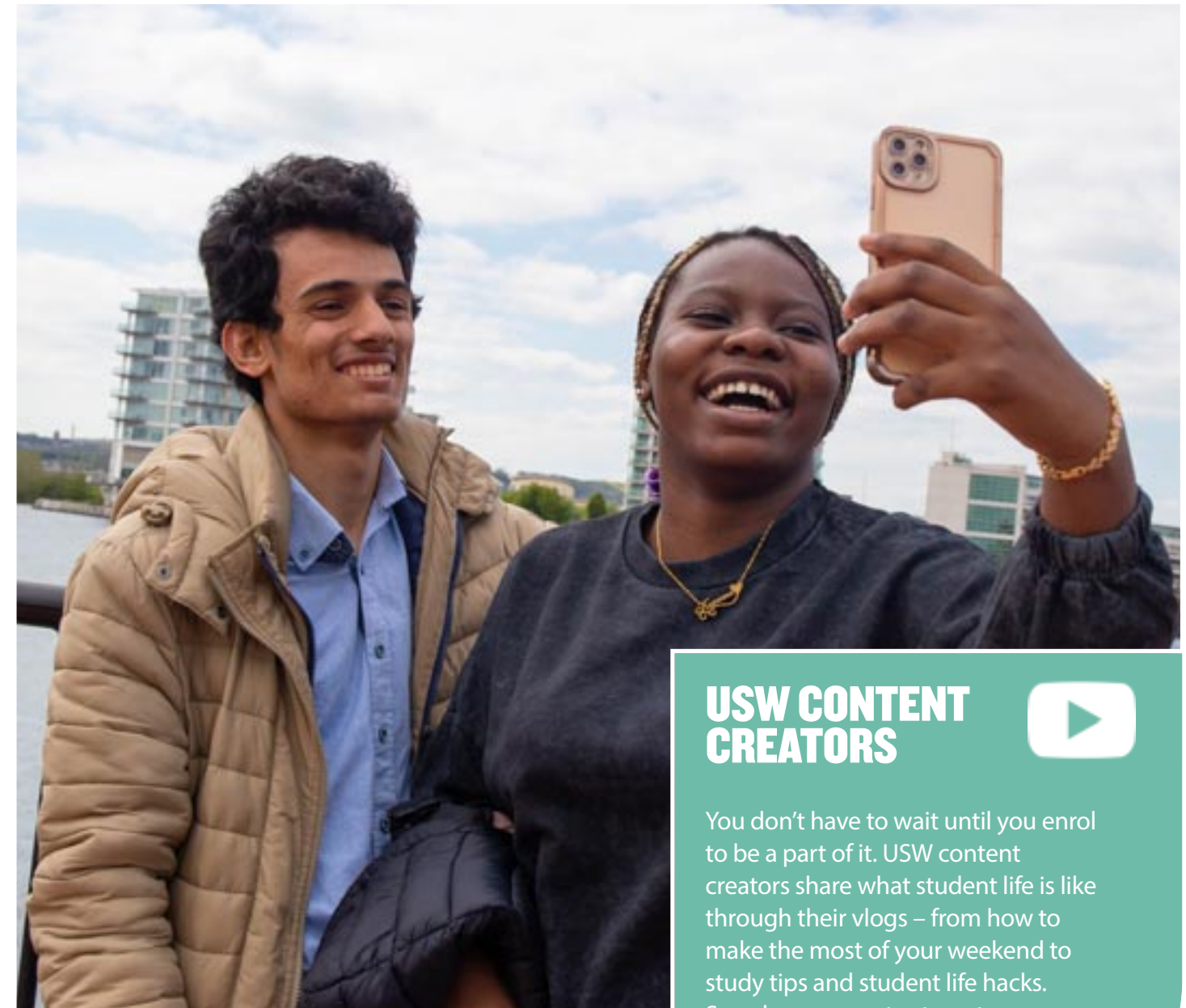
Undeb Myfyrwyr  
Prifysgol De Cymru  
University of South Wales  
Students' Union

## CLUBS AND SOCIETIES

If you join a club or society, you will meet lots of new people and get involved in all sorts of activities, from demonstrations and day trips, to nights out and parties.

## SOCIAL LIFE

There is lots of entertainment at the Union. It's a friendly place, where you can watch live sport on the big screen, enjoy a meal, grab a coffee, or just take a break and relax. In the evenings, you can enjoy live bands, pub quizzes, film screenings, theme nights and more.



## USW CONTENT CREATORS



You don't have to wait until you enrol to be a part of it. USW content creators share what student life is like through their vlogs – from how to make the most of your weekend to study tips and student life hacks. Search @uswcontentcreators on YouTube to find their account.

If you have specific questions about what it's like to study at USW or your course, you can chat to USW students and staff through our website – visit: [www.southwales.ac.uk](http://www.southwales.ac.uk)



# SPORT AT USW

USW Sport has some of the best facilities in the UK, offering clubs, courses and qualifications.

USW Sport is for everyone. Trying a new sport or joining a club is a great way to make friends – from indoor climbing to yoga, archery and everything in between, there's sure to be something you'll enjoy.

## GET ACTIVE, STAY HEALTHY

The Sport Centre at USW Pontypridd has everything you'll need. All students can use the Sport Centre at Pontypridd, but we've arranged discounted rates with gyms and health clubs in Cardiff and Newport for students who live or study in the city.

USW has a strong competitive sport environment and it's a major part of student life. We have over 60 teams playing in the British Universities and Colleges (BUCS) leagues. Over the last few years, we've had outstanding success in football, rugby, basketball, water polo, swimming, volleyball and badminton.



## USW SPORT PARK

This is one of the best university sport coaching and training venues in the country.



Our full-sized indoor football pitch is the only one at a university in England and Wales and is built to FIFA Pro and World Rugby 22 standard.



Our sports hall includes a national standard six badminton court with sprung floor.

We have 11 other pitches, including four floodlit pitches, an artificial training pitch and a 3G rubber crumb floodlit football pitch.



Specialist centre for strength and conditioning with 12 lifting platforms, providing a high-performance environment for aspiring athletes.





# USEFUL INFORMATION

## ABOUT THIS GUIDE

This guide provides general guidance and does not form part of any contract. The information given has been produced well in advance of delivery of the courses outlined for students due to enter the University in 2024-25 academic year. While it is believed to be correct at the time of production, our website should be checked for the latest position. The University reserves the right to amend or discontinue courses, or alter facilities, as a response to circumstances beyond its control or where it considers it reasonably necessary to do so. The University will endeavour to respond to change by consulting with those affected and/or taking remedial actions to help them. For the latest information visit: [www.southwales.ac.uk/money](http://www.southwales.ac.uk/money)

## QUALITY ASSURANCE

The QAA diamond logo and 'QAA' are registered trademarks of the Quality Assurance Agency for Higher Education and demonstrate that the University has undergone independent review of the standard of higher education provision, and achieved a successful result.



## DESIGN

Produced by the Future Students Department. Many thanks to all those who helped with this project.

Design: USW Print and Design  
[www.uswprintanddesign.co.uk](http://www.uswprintanddesign.co.uk)

## UNIVERSITY OF SOUTH WALES GROUP



The University of South Wales Group comprises the University of South Wales, The College Merthyr Tydfil, and the Royal Welsh College of Music & Drama.

## ACCESSIBILITY

The University of South Wales is committed to developing websites and publications that are fully inclusive. We make every effort to ensure all pages on the website and in publications comply with accessibility guidelines. Due to the size and complexity of the University's web presence this is an ongoing process.

To make our publications as accessible as possible, we offer two ways of accessing, viewing and reading them. You can either read them through the ISSUU platform or view online and download a PDF. The PDF file has been developed to be accessible. We then use this exact file and upload it to ISSUU to retain as many of the accessibility features as possible through the platform.

To read what accessibility features have been implemented within the PDF, please visit our website. If you have any questions or feedback regarding the accessibility of this website or our publications, or if you experience any difficulty, please contact us.

For help with accessibility, please e-mail: [accessibility@southwales.ac.uk](mailto:accessibility@southwales.ac.uk) For help with disabilities or additional needs, please e-mail: [disabilityadviser@southwales.ac.uk](mailto:disabilityadviser@southwales.ac.uk)



Hamzah Basheer, Yemen  
International Foundation Programme (IFP)  
Business and Social Science



# WHAT NEXT?

There are lots of ways to connect with us and find out more about USW.


**1** Find out more about USW:  
[www.southwales.ac.uk/international](http://www.southwales.ac.uk/international)



**2**  Visit the 'Your Country' pages on our website.

**3** Check the latest fees and scholarships information.



**4**  Contact us or our representatives in your country to answer any questions you may have.

**5** Search: USW International



新浪微博  
weibo.com



**Issue 02:** Information in this brochure is correct at the time of publication, July 2023, but may be subject to change. For the most up-to-date information, call or check our website: [www.southwales.ac.uk](http://www.southwales.ac.uk)

The University of South Wales is a registered charity. Registration No. 1140312.