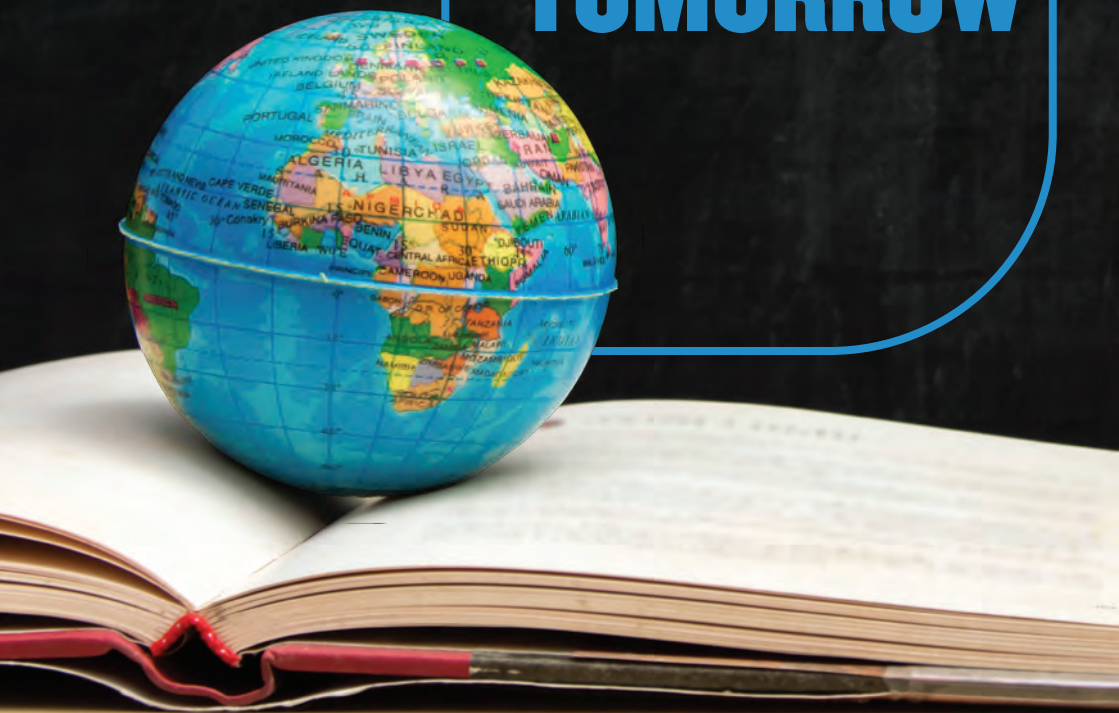


# DISCOVER YOUR TOMORROW



## TOP UP AND MASTERS DEGREES 2022-23

Study in the UK for just two years and gain a Bachelor and a Masters degree.  
Scholarships of £6000 when you progress from undergraduate to postgraduate at USW.

[www.southwales.ac.uk/international](http://www.southwales.ac.uk/international)

# THE UNIVERSITY OF SOUTH WALES

## Why study with us?

In our increasingly globalised world, graduates need international experience to show they are adaptable and culturally fluent. What better way to kick-start your career than to have studied and succeeded in the UK?

We offer an extensive variety of courses, which are delivered in a stimulating, challenging and engaging learning environment. We also have an excellent reputation for graduate employment, teaching, support and student satisfaction.

Whether you are learning with senior leaders from the BBC or aerospace engineers from major airlines, you will be part of a professional university that understands employers and gives you a head start for the real world of work.

## Career prospects

Many of our courses are delivered by professionals who have entered academia after working in the public and private sectors. This means their

knowledge of the industry is up to date, so what you learn is relevant to the world of work. At the University of South Wales, all our courses are designed with your career in mind so we can help you develop the skills, confidence and knowledge to succeed.

Some of our career services include:

- **Work placements:** The University has a dedicated Careers Service to help you find work experience and placements.
- **Industry links:** We work closely with global companies including IBM, Rolls-Royce, HSBC, BBC and British Airways to ensure that our courses give you the skills that employers are looking for.
- **Accreditation:** Many of our courses have industry approval through accreditations from a range of professional bodies.
- **Grad Edge:** Grad Edge is the employability programme at the University of South Wales. It provides extra-curricular opportunities such as guest lectures, networking opportunities, and practical training such as how to maximise your CV and LinkedIn profile.



“

**MY COURSE COVERED A WIDE RANGING KNOWLEDGE OF BUSINESS, AS WELL AS SOME HOT TOPICS SUCH AS: GLOBALISATION, INTERCULTURAL COMMUNICATION, AND NEW VENTURE. AS A BUSINESS STUDENT I FEEL I AM NOW TRAINED IN ALL ASPECTS OF BUSINESS.**

**Miss Shuqi Li**

Pre-sessional English and International Business (Top Up)



Cardiff Bay tour, International Welcome Week

## Learning experience

The University of South Wales has an excellent reputation for teaching quality, state-of-the-art study facilities and supportive staff.

Our academic staff are committed to ensuring that lectures, tutorials, seminars and workshops are based on real-life problems, and are engaging and relevant for every student. In addition, staff members organise field trips and social activities to ensure students benefit from working together. Our undergraduate courses are designed to develop knowledge and

skills, and provide opportunities to put these to the test. At postgraduate level, all our professional teaching is face-to-face; we use e-learning as support, not a substitute for class contact time.

Assessment methods vary and may include coursework, peer group assessment, self-assessment, individual and group presentations, and written examinations. Our Top Up and Masters aim to enhance the vocational relevance of your previous studies by developing your analytical skills. They are designed to equip you for immediate employment and to prepare you for a successful career.

### South Wales Business School

Business, accounting and finance skills are in great demand all over the world. They provide excellent career opportunities and a strong foundation for upward career mobility.

The South Wales Business School boasts a wide range of business courses, many of which are accredited by leading international professional bodies, including:

- The Association of Certified Chartered Accountants (ACCA)
- The Chartered Institute of Purchasing and Supply (CIPS)
- The Chartered Institute of Personnel and Development (CIPD)
- The Chartered Institute of Marketing (CIM)
- The Chartered Institute of Logistics and Transport (CILT)

These accreditations recognise excellent teaching and enable our students to gain exemptions from professional examinations, as well as affiliated membership of certain professional bodies. For example:

- The University is an ACCA Platinum Approved Learning Partner.
- The University was the first in the UK to be awarded Centre of Enterprise Excellence by the UK Sector Skills Body for Enterprise.
- We are one of the largest Centres of Excellence for the CIPS, reflecting our excellent teaching and international reputation in the field of logistics.

In addition to the professional recognition awarded to our courses, students also have access to professional facilities to enhance their learning experience. Accounting and finance students use financial trading room, including state-of-the-art computer hardware and software, and large plasma screens featuring financial data from Bloomberg (the premier site used across the financial trading world). This facility adds a new dimension to our accounting and finance courses, allowing students to combine theory and practice in simulated decision-making environments.

As well as support from academic staff, the University has appointed Top Up Tutors who provide support to all students studying in the Faculty. The tutors are happy to help you adjust to living and studying in the UK, and to overcome any potential language or cultural barriers by directing you to the right support service at the University.







Aerospace Centre, Pontypridd Campus



Cardiff Campus

## Faculty of Computing, Engineering and Science

To ensure students are using state-of-the-art and industry-standard equipment, the Faculty of Computing, Engineering and Science continually evaluates its laboratories and teaching spaces, and regularly updates them.

In addition to providing dedicated Mac and PC laboratories, the Faculty provides specialist facilities for students. For example:

- The Calypto lab provides software licences and support for the Catapult C toolset. This is used to develop advanced electronic products more quickly and cost-effectively, such as the next generation of smart phones, and helps engineers overcome design challenges in the increasingly complex world of board and chip design. The lab is sponsored by Calypto Design Systems Inc, a leader in electronic design automation. We are one of only four UK universities and 60 universities globally that have been granted permission to use this software, worth £1.9million.
- The Faculty's Renesas Embedded Systems lab comprises 25 new, high-end terminals that run cutting-edge tools. The facility was designed in collaboration with Renesas, the world's leading supplier of microcontrollers, whose sponsorship helps ensure that students are always working with the latest technologies and developments.

## The Faculty of Creative Industries

The Faculty is located in Cardiff city centre campus with two schools offering degrees in over 10 subject areas, such as Animation and Games, Journalism and Media, Design and Communication, Drama and Performance.

To ensure students are gaining the right skills required by the industry, the Faculty provides state-of-the-art and industry-standard equipment and plenty of opportunities for students to take part in real-life projects through our extensive industrial links.

The Faculty is also home to Film & TV School Wales. Film & TV School Wales builds on over 50 years of film education at the University of South Wales, formerly at the Newport Film School. Our Graduates include the Oscar-winning Asif Kapadia (Senna, Amy), Phil John (Downton Abbey, Being Human), and hundreds of others working at the highest levels in film and TV around the world.

## Faculty of Life Sciences and Education

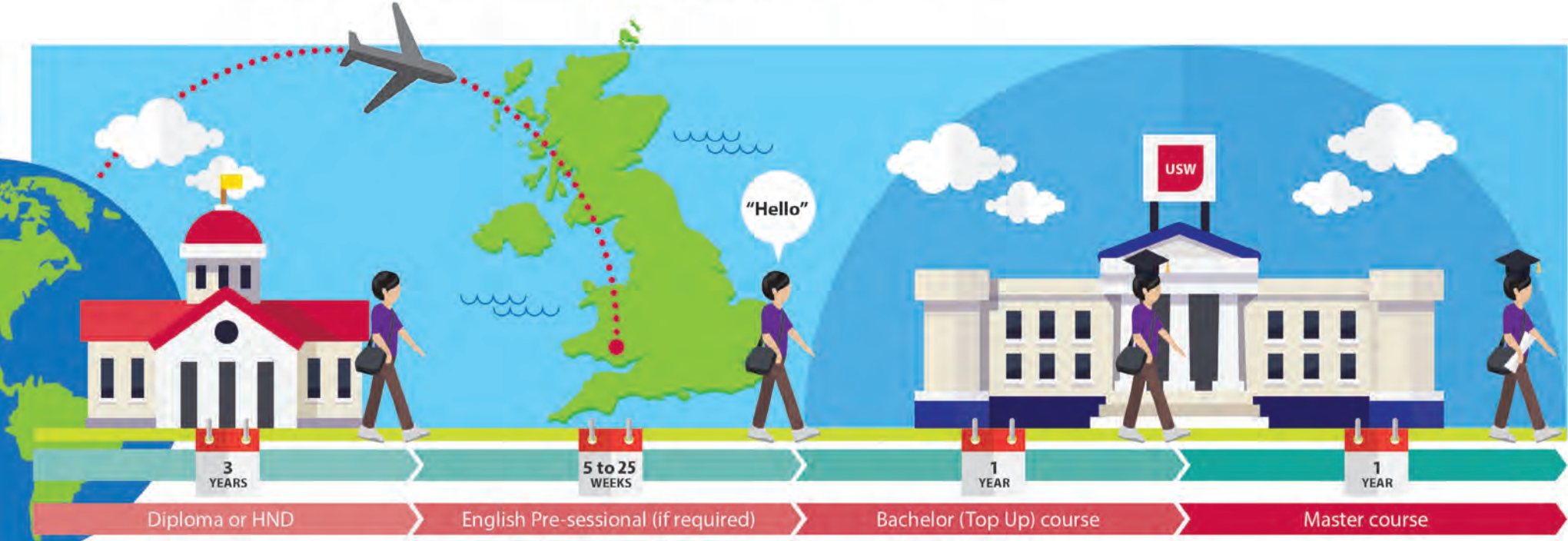
The Faculty of Life Sciences and Education are introducing their first Top Up Degree in September 2022 – BA (Hons) Education: Early Years.

Delivered by our School of Education, Early Years and Social Work, the course explores and evaluates global best practice in early years education with a core focus on the developmental needs of children from birth to 7 years old.

The faculty offers a number of exciting postgraduate courses that top up students can progress to – see page 8 for more information.

# GAIN A BACHELOR AND A MASTERS DEGREE IN JUST TWO YEARS

Courses available in Business, Creative Industries, Engineering **OR** Education



\*with a minimum of 3.5 in all components

\*\*with a minimum of 4.0 in all components

\*\*\*with a minimum of 4.5 in writing and 4.0 in all other components

\*\*\*\*with a minimum of 5.5 in writing and 5.0 in all other components

Current Level	Duration	Tuition Fee
IELTS 3.5*	25 weeks	£9,500
IELTS 4.0*	20 weeks	£7,600
IELTS 4.5**	15 weeks	£5,700
IELTS 5.0***	10 weeks	£3,800
IELTS 5.5/6.0****	5 weeks	£1,900

**£13,700-14,000**

**£14,500-15,500**

**Save £6,000 when you  
progress from undergraduate  
to postgraduate at USW\***

\*Terms and conditions apply

# TOP UP DEGREES AND PROGRESSION ROUTES

## SOUTH WALES BUSINESS SCHOOL

### Top Up Degrees (1 year)

- BSc (Hons) Banking, Finance and Investment (Top Up)
- BA (Hons) International Business (Top Up)
- BA (Hons) Business Management (Top Up)
- BA (Hons) Business Management (Accounting and Finance) (Top Up)
- BA (Hons) Business Management (Marketing) (Top Up)
- BA (Hons) Business Management (Human Resource Management) (Top Up)
- BA (Hons) Business Management (Supply Chain Management) (Top Up)
- BA (Hons) Business Management (Enterprise and Innovation) (Top Up)
- BA (Hons) Business Management (Event Management) (Top Up)

### Leading to Masters Degrees (1 year)

- MSc Finance and Investment
- MSc Forensic Audit and Accounting
- MSc Financial Services Management
- MSc Engineering Management
- MSc Human Resource Management
- MSc International Logistics and Supply Chain Management
- MSc Leadership and Management
- MSc Management
- MSc Strategic Digital Marketing
- MSc Strategic Procurement Management
- MSc Project Management
- MSc Health and Public Service Management
- MBA
- MBA Global (2 years)

## FACULTY OF COMPUTING, ENGINEERING AND SCIENCE

### BSc (Hons) Applied Computing (Top Up) leading to:

- MSc Computer Science
- MSc Computer Systems Security
- MSc Computing and Information Systems

### BSc (Hons) Electrical and Electronic Engineering (Top Up), leading to:

- MSc Electronics and Information Technology
- MSc Mobile and Satellite Communications

### BSc (Hons) Engineering Technology Management (Top Up), leading to:

- MSc Engineering Management
- MSc Project Management

### BSc (Hons) Aircraft Engineering and Maintenance Systems (Top Up) leading to:

- MSc Aeronautical Engineering
- MSc Aviation Engineering and Management

## FACULTY OF CREATIVE INDUSTRIES

### BA (Hons) Visual Production (Top Up) leading to:

- MA Film
- MA Film (Screen Writing)
- MA Film (Directing)
- MA Film (Production Management)
- MA Film (Documentary)
- MA Film (Editing)
- MA Animation

### BSc (Hons) Creative Industries (Popular Music Technology) (Top Up) leading to:

- MA Songwriting and Production
- MA Music Engineering and Production

## FACULTY OF LIFE SCIENCES AND EDUCATION

### BA (Hons) Education: Early Years (Top Up) leading to:

- MA CAMH (Child Adolescent Mental Health)
- MA Education (Innovation in Teaching and Learning)
- MA Leadership and Management (Education)
- MA Working for Children and Young People

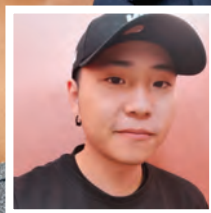


**TAKING THE COURSE OF ELECTRICAL AND ELECTRONICS ENGINEERING IN USW PROVIDES ME WITH AN EASIER ACCESS TO THE ELECTRONICAL INDUSTRY. LOTS OF MY CLASSMATES ALREADY HAVE EXTENSIVE WORK EXPERIENCES IN THIS INDUSTRY. SO I HAVE THE CHANCE TO KNOW ABOUT CURRENT DEVELOPMENT FROM BOTH MY CLASSMATES AND LECTURERS.**

**Jingye Sheng**

BSc Electrical and Electronic Engineering (Top Up)





“

**AT THE BEGINNING, I FOUND QUITE DIFFICULT TO ADAPT TO THE NEW ENVIRONMENT ESPECIALLY WHEN MY ENGLISH WAS NOT SO FLUENT. HOWEVER, THE PRE-SESSIONAL ENGLISH COURSE WAS BRILLIANT. SOON, I MADE LOVELY FRIENDS HERE AND NOW I FEEL SO MUCH MORE CONFIDENT THAT I WILL HAVE A GREAT TIME HERE AT USW**

**Yao Wang**

BA (Hons) Business Management  
(Accounting and Finance) (Top Up)



# ABOUT US

## Location

The University has three campuses in the capital city of Wales, Cardiff and its region. Our campuses are student communities with a great atmosphere. On campus, you'll find everything you need in one place – your classes, the library, places to eat and drink, and places to spend time with your friends. Most Top Up degrees are taught at our Pontypridd Campus, a compact campus with a friendly atmosphere. Twenty minutes from Cardiff and surrounded by green rolling hills, Pontypridd attracts students from all over the world.

## Living costs

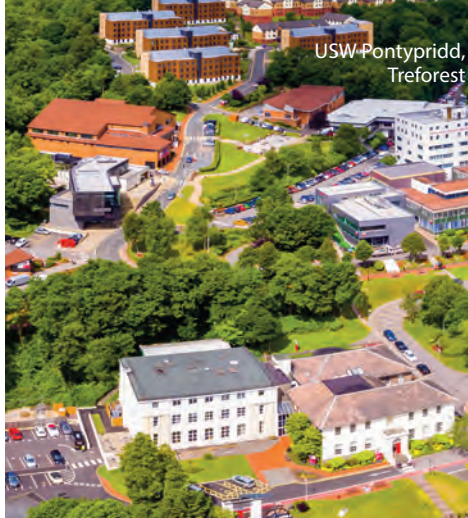
UK Visas and Immigration suggests that students should allow approximately £1,023 per month for living costs (not including tuition fees).

## Lifestyle

There are Students' Union facilities on every campus. There are more than 50 student clubs and societies on offer, some created especially for international students. There are plenty of activities for you to choose from that will help you stay healthy and active, including cycling, rugby, badminton, golf, athletics and many more. The University is also in an ideal location to watch sport, experience UK culture, and have fun, with easy access to attractions such as the Principality Stadium, Cardiff Castle, the Wales National Velodrome, and the Brecon Beacons National Park.

## Accommodation

Whether you want to live on campus or nearby, we'll help you feel at home. The Accommodation team is responsible for allocating and managing your accommodation, including housekeeping and facilities associated with your Halls of Residence. Most international students prefer to stay on



campus in their first year, but the team can help you find accommodation off campus too.

To give you an idea of cost, typical accommodation prices on our Pontypridd Campus:

### Self-catered, en suite single room:

From £123.55 per week

### Self-catered, en suite micro flat:

From £177.03 per week

### Off-campus standard room:

From approximately £50 per week (excluding utilities)

# COURSE INFORMATION

## Start dates

September 2022 and February 2023

\* Subject to availability

## Entry requirements for Top Up degrees

- An Higher National Diploma (HND) or equivalent in a relevant subject area
- IELTS 6.0 with a minimum of 5.5 in each band (or equivalent scores in a recognised English language test), or higher.
- If you do not meet these English language requirements we offer a range of pre-sessional courses to prepare you for academic study. You must take a UKVI IELTS for entry on to a pre-sessional course.

## Entry requirements for progression to Masters degrees

- 2:2 Honours from the Top Up degree (or higher) will guarantee you a place to study on a related Masters degree.
- Students studying the BSc (Hons) Civil Engineering (Post Diploma) will need to attain a 2:1 Honours in their Top Up degree to progress to the related Masters degree.

**SAVE £6,000  
WHEN YOU PROGRESS  
FROM UNDERGRADUATE  
TO POSTGRADUATE AT USW  
WITH OUR PROGRESSION  
SCHOLARSHIP**



USW Newport

	Tuition fee	Scholarship
<b>Top Up Courses</b>		
Top Up course in Business or Creative Industries	£13,700	£1,500-2,500
Top Up course in Computing, Education, Science or Education	£14,000	£1,500-2,500
<b>Masters courses</b>		
MBA Global/LLM Legal Practice Course	£15,500	£2,000-2,500
MBA/MA/MSc/LLM in Business, Creative Industries or Law	£14,500	£2,000-2,500
MA/MSc in Computing, Engineering, Science or Education	£14,700	£2,000-2,500



USW Pontypridd,  
Glyntaff



USW Pontypridd,  
Treforest



USW Cardiff

For further information or to submit an application, please visit:  
**[southwales.ac.uk/international](http://southwales.ac.uk/international)**

If you have any questions, please contact us:  
International Enquiries and Admissions,  
University of South Wales, Pontypridd, Wales,  
CF37 1DL, UK

**E-mail:**  
**[international.admissions@southwales.ac.uk](mailto:international.admissions@southwales.ac.uk)**  
**Tel: +44 (0) 1443 654 450**



USW Newport

Information in this brochure is correct at the time of print, but may be subject to change. For the most up-to-date information, call or check our website: **[www.southwales.ac.uk](http://www.southwales.ac.uk)**

Design: USW Print and Design 01443 482 677

The University of South Wales is a registered charity. Registration No. 1140312.